

DAVID PAIGE WINES DAVID

DAVID
PAIGE
WINES

2018
WILLAMETTE VALLEY
PINOT NOIR

DAVID
PAIGE
WINES

SALES KIT

WHO WE ARE

WE HAVE DECADES OF EXPERIENCE MAKING EXCEPTIONAL WINE FROM GREAT VINEYARDS IN THE WILLAMETTE VALLEY.

Dave Paige has been part of the west coast wine industry for over 30 years. He began his career in California before heading north to Oregon and settling at famed Adelsheim Vineyards in the Willamette Valley, where he spent nearly two decades as Winemaker. There he honed the skills to craft the distinctive Pinot Noir and Chardonnay that are the valley's hallmark. In 2018, Dave decided he wanted to try his hand at creating his own label, and began looking around the Willamette Valley for vineyard property he could take on to create his own winery. Separately, two friends in Indiana—one with roots in Oregon—were discussing creating a winery of their own.



We believe in “Esprit de Corps,” a sense of shared pride, fellowship, and loyalty.

John Gorup and George Rickus began their own search for a vineyard and winery to purchase in the Willamette Valley in early 2018. For them, the right opportunity was predicated on finding a solid long-term investment, in a business they could feel passionate about, and having fun while doing so. A series of mutual acquaintances introduced George to Dave Paige, and soon Dave became a third partner in the process.





We came together to create authentic, impeccably crafted wines that delight our customers and show a deep connection to the vineyards they came from. And to be stewards of one of the few great places on earth to grow and produce these noble cool-climate varieties.

We offer wine lovers a profound connection to the Willamette Valley through exceptional wines rooted in a deep respect for our vineyard and the vineyards we work with.

Now working as a team, the three families toured the valley looking for the right property. They were especially excited by the Eola-Amity Hill; the wines were some of the most distinctive in the valley, epitomizing the connection between the land and the wine for which the Willamette Valley is known. Together, they found a beautiful site with mature vines on a volcanic ridge and rechristened it RPG Vineyard, combining their three last initials. This would be the home of David Paige Wines.



THE TEAM

DAVID PAIGE, WINEMAKER

David Paige has been making wine in Northern California and Oregon for over 30 years. Armed with a UC-Davis Fermentation Science degree, Dave gained experience at wineries in the Sierra Nevada foothills, Napa Valley, and Australia. He then spent nine years in Monterey County and the Santa Lucia Highlands, where he focused on Pinot noir and Chardonnay. It was also in Monterey that he met his wife Dysthe, an event planner who has worked on several wine events in Monterey and Oregon.



His love of cool climate wines brought him to Oregon, where he met David Adelsheim. He signed on as Adelsheim's Winemaker in 2001 and spent nearly two decades solidifying their status as one of the great brands of the Willamette Valley. Adelsheim also gave Dave the chance to work with exceptional vineyards from all over the valley.

During this time he learned how to adapt his winemaking techniques to different sites, "following the fruit" to the wine it was best suited for. Dave has become an important member of the winemaking community in the Willamette Valley. He has been a colleague and mentor to many people in the valley and has been on the boards of the International Pinot Noir Celebration and Oregon Pinot Camp. In 2018 he decided the time was right for a new beginning. David Paige Wines is a return to his small-winery roots from his Santa Lucia Highlands days, but with volcanic soil and a lot more rain.

Dave currently lives in the Willamette Valley with his wife Dysthe. If he had any spare time, he would love to be kayaking.

THE TEAM

JOHN GORUP, PARTNER

John Gorup, MD is a New York native having grown up in Great Neck, Long Island. His journey to winery ownership is perhaps more traditional than Dave and George's. As the child of two European parents, wine was a typical staple at all meals and family gatherings. He would also regularly travel back to Europe to see family, and it was during these trips that John first began to appreciate and recognize good food and wine. Based on their appreciation of the minerality and crispness of White Burgundy and the subtleness of Pinot Noir from Burgundy, it was no surprise that the Gorups would love and appreciate the wines of the Willamette Valley in Oregon.



GEORGE RICKUS, PARTNER

George Rickus grew up outside of Portland with his three siblings, all of whom still live in the area. He met his wife, Jenna, working together in Chicago as food scientists for a major food company. There, George passed on opportunities for company-sponsorship in continuing education in the culinary arts or brewing sciences in favor of a degree in business, thus demonstrating the kind of poor judgment he would later come to be known for by his partners at David Paige Wines. With MBA in-hand, he followed Jenna to California and embarked upon a career in corporate strategy, before ultimately relocating to the Midwest.



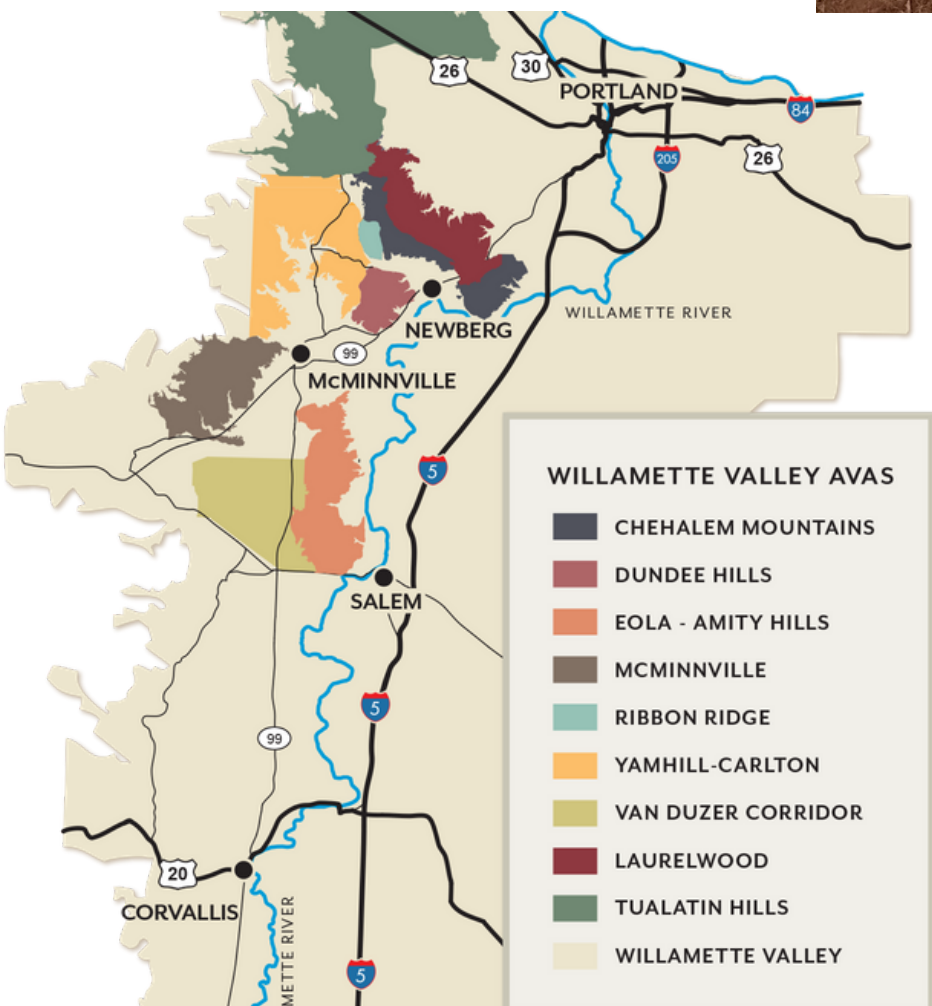
VOLCANIC SOIL

MATURE VINES STRUGGLE AGAINST THE ROCKY SOIL, PRODUCING WINES OF GREAT DEPTH AND ELEGANCE.

Our RPG Vineyard has been LIVE Certified Sustainable for many years. Bill Blanchard's vines are in his back yard, and probably some of the most sustainably farmed vines anywhere. He doesn't bother with the paperwork, though.

There are a total of nearly 26 acres planted in RPG Vineyard, the majority is made up of Pinot Noir (22.55 acres) with the remainder made up of Chardonnay (1.37 acres) and Pinot Blanc (1.62 acres).

Staying true to what drew Dave, John and George to the Eola-Amity Hills, David Paige Wines' aim is to create great wines from Chardonnay and Pinot Noir that have classic character and highlight the terroir from which they are grown. They reinforce the status of Oregon wine country as one of the top areas on the planet for growing cool climate varieties.



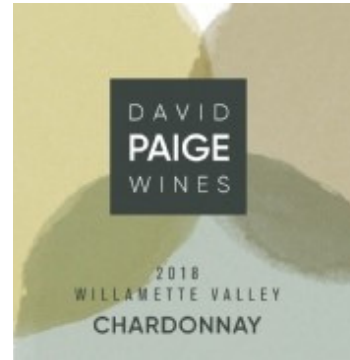
The Willamette Valley is 150 miles long and 60 miles wide, covering 3,438,000 acres (5372 square miles) of which 23,524 are planted to vines. The region runs from Portland in the north to Eugene in the south and lies between the Coast Range to the west and the Cascade Range to the east. Within the Willamette Valley, there are currently nine AVAs: Eola-Amity Hills, Yamhill-Carlton, McMinnville, Dundee Hills, Chehalem Mountains, Ribbon Ridge, Van Duzer, Laurelwood and Tualatin Hills.

OUR WINE

WILLAMETTE VALLEY CHARDONNAY

93 WINE & SPIRITS | 91 WINE ENTHUSIAST

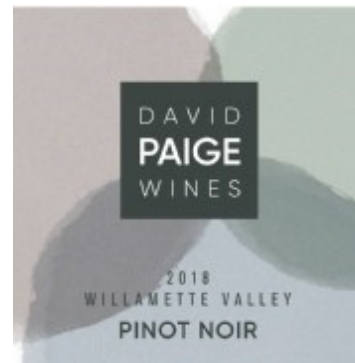
Crisp and lively, with wet-stone minerality and dense floral character from our RPG Vineyard, an East-facing site in the northern Eola-Amity Hills. There's also a splash of citrus from Bill Blanchard's tiny vineyard high in the Chehalem Mountains. As it opens it also shows lovely stone fruit, with a bright richness that lingers a full minute or longer.



WILLAMETTE VALLEY PINOT NOIR

92 WINE SPECTATOR | 91 VINOUS
91 WINE ENTHUSIAST

A blend of grapes from the Chehalem Mountains, Ribbon Ridge, and our home in the Eola-Amity Hills. The result is a complex mix of marion berry and raspberry, adding cherry and dark spice as it opens up. Long and complex, and just starting to strut its stuff. Will continue to evolve and gain richness for many years, or however long your patience allows



CHEHALEM MOUNTAINS PINOT NOIR 92 VINOUS

Opens with dense red fruit, with dark spices building over time. By the second glass the fruit gets richer and darker, and the spices evolve toward cocoa on the finish.



RPG VINEYARD PINOT NOIR 94 VINOUS | 90 WINE ENTHUSIAST

Dark earth, dark baking spices lead the aromas, with juicy red cherry and toasted spices filling the mouth. Opens with time revealing dark wild cherries and a long, elegant finish.



2018 WILLAMETTE VALLEY CHARDONNAY

93 WINE & SPIRITS | 91 WINE ENTHUSIAST

Tasting Notes: Crisp and lively, with wet-stone minerality and dense floral character from our RPG Vineyard, an East-facing site in the northern Eola-Amity Hills. There's also a splash of citrus from Bill Blanchard's tiny vineyard high in the Chehalem Mountains. As it opens it also shows lovely stone fruit, with a bright richness that lingers a full minute or longer.

Varietal: 100% Chardonnay

Vineyards: 87% RPG Vineyard in the Eola-Amity Hills, 13% Blanchard Vineyard in the Chehalem Mountains

Farming: 100% LIVE Certified Sustainable

Soils: Our RPG Vineyard is on a volcanic ridge poking out from the Eola-Amity Hills. The Blanchard Vineyard has the Laurelwood soils typical of the north side of the Chehalem Mountains

Clones: 76, 95, a splash of 548

Fermentation: Fermented 88% in aged French oak barrels and 12% new

Bottling: August 2019

Alcohol: 13.5%

Pricing: SRP \$30/btl



2018 WILLAMETTE VALLEY PINOT NOIR

92 WINE SPECTATOR | 91 VINOUS | 91 WINE ENTHUSIAST

Tasting Notes: A blend of grapes from the Chehalem Mountains, Ribbon Ridge, and our home in the Eola-Amity Hills. The result is a complex mix of marionberry and raspberry, adding cherry and dark spice as it opens up. Long and complex, and just starting to strut its stuff. Will continue to evolve and gain richness for many years, or however long your patience allows.

Varietal: 100% Pinot Noir

Vineyard: Grand Oak, Sufi, Wind Ridge, RPG

Farming: 100% LIVE Certified Sustainable.

Soil: A mixture of sites and soils ranging from the sandy marine sediments of Ribbon Ridge, the Laurelwood soils on the north side of the Chehalem Mountains, and volcanic soils from the Eola-Amity Hills.

Fermentation: Aged in French oak barrels, 25% new.

Bottling: August 2019

Alcohol: 13.5%

Pricing: SRP \$39/btl



2018 CHEHALEM MOUNTAINS PINOT NOIR

92 VINOUS

Tasting Notes: Opens with dense red fruit, with dark spices building over time. By the second glass the fruit gets richer and darker, and the spices evolve toward cocoa on the finish.

Varietal: 100% Pinot Noir

Vineyard: 92% Wind Ridge, 8% Sufi, Chehalem Mountains, Oregon

Farming: 100% LIVE Certified Sustainable.

Soil: Sandy marine sediments on Ribbon Ridge, Laurelwood at Sufi

Clones: 115, 667, 777, and Pommard

Fermentation: 25% whole cluster

Bottling: August 2019

Alcohol: 13.5%

Pricing: SRP \$62/btl



2018 RPG VINEYARD PINOT NOIR

94 VINOUS | 90 WINE ENTHUSIAST

Tasting Notes: Dark earth, dark baking spices lead the aromas, with juicy red cherry and toasted spices filling the mouth. Opens with time revealing dark wild cherries and a long, elegant finish.

Varietal: 100% Pinot Noir

Vineyard: RPG Vineyard, Eola-Amity Hills, Oregon

Farming: 100% LIVE Certified Sustainable.

Soil: Our RPG Vineyard is on a volcanic ridge poking out from the Eola-Amity Hills. Thin, red soils full of rocks, with large boulders just under the surface.

Fermentation: 20% whole cluster, 20 days total skin contact

Bottling: August 2019

Alcohol: 13.5%

Pricing: SRP \$80/btl





CONTACT:
DAVID PAIGE
DAVE@PAIGEWINES.COM
PHONE:
503.880.0837

WWW.DAVIDPAIGEWINES.COM